

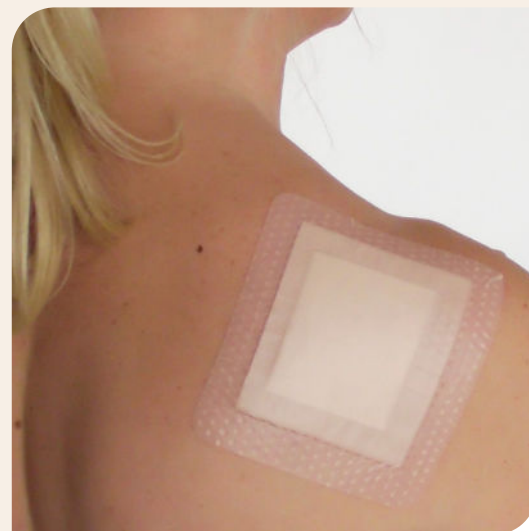
# DryMax Border

DryMax Border is indicated for use on exuding wounds. DryMax Border is a sterile, bordered superabsorbent dressing with a silicone wound contact layer for fixation.

DryMax Border is a superabsorbent dressing that locks in wound exudate. The exudate is transported away from the wound area efficiently into the DryMax Technology core. A moist wound environment is maintained and the risk for maceration and damage on the peri-wound skin is minimized. The wound dressing absorbs wound fluid containing bacteria and other detrimental substances for the wound healing process.

DryMax Border can be used directly on exuding wounds. The soft and highly conformable material allows close skin contact. The silicone contact layer makes the dressing comfortable for the patient and easy to apply, even on challenging body parts where stiffer dressings are not suitable. The silicone layer also provides fixation and its atraumatic surface helps with a soft removal.

DryMax Border has a protection liner that is easy to remove at application. Place the white wound contact side with a silicone adhesive towards the wound. Apply smoothly to avoid creases on the border. The adhesive layer makes it easy to apply and reposition the dressing. During use, the dressing feels dry and comfortable, with a breathable water-resistant backing. DryMax Border can be combined with compression therapy.



- All-in-one dressing
- Atraumatic silicone contact layer
- Locks in wound exudate

Item	Product size cm	REF	Pcs/box	Absorption-capacity*
DryMax Border	10x10	F50513/10	10	25 ml
DryMax Border	15x15	F50514/10	10	75 ml
DryMax Border	10x20	F50515/10	10	55 ml

\* According to international standard EN 13726



Manufactured by Absorbest AB Sweden  
 Distributed by Alliant Biotech, Inc.  
[www.alliantbiotech.com](http://www.alliantbiotech.com)  
 888-307-1144

**DryMax® technology**