

## PRE-OPERATIVE IMAGING

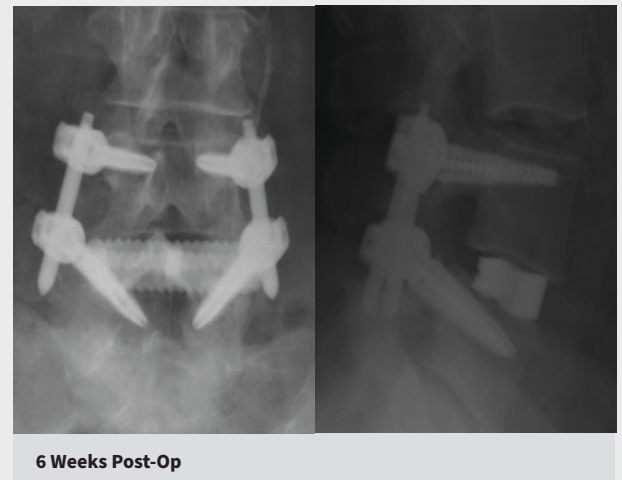
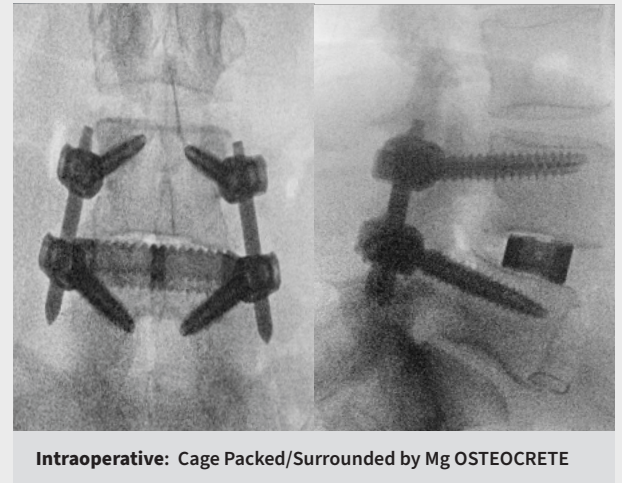
Posterior lumbar interbody fusion procedure with cage and fixation hardware.

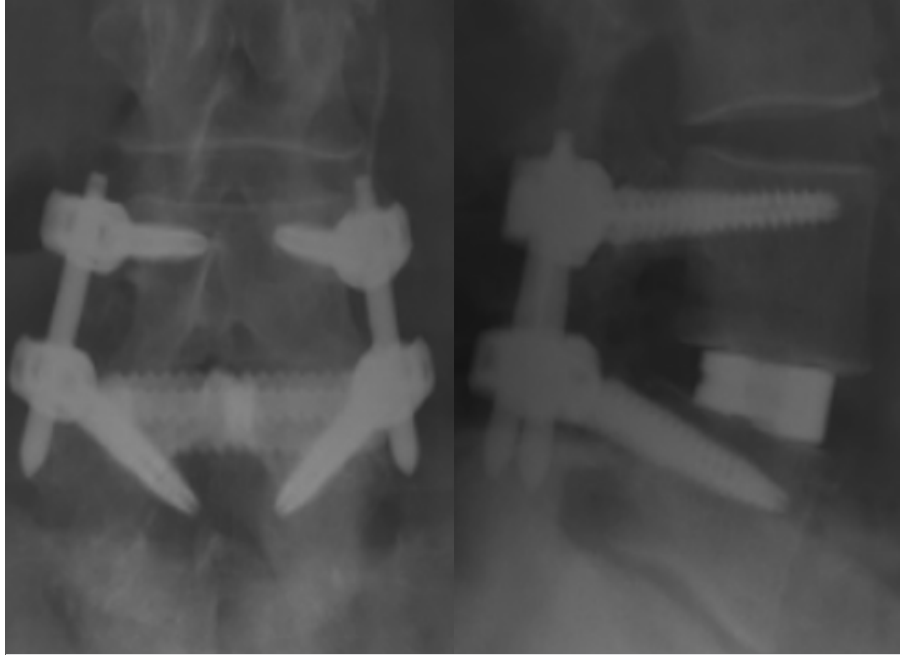


## SURGICAL INTERVENTION

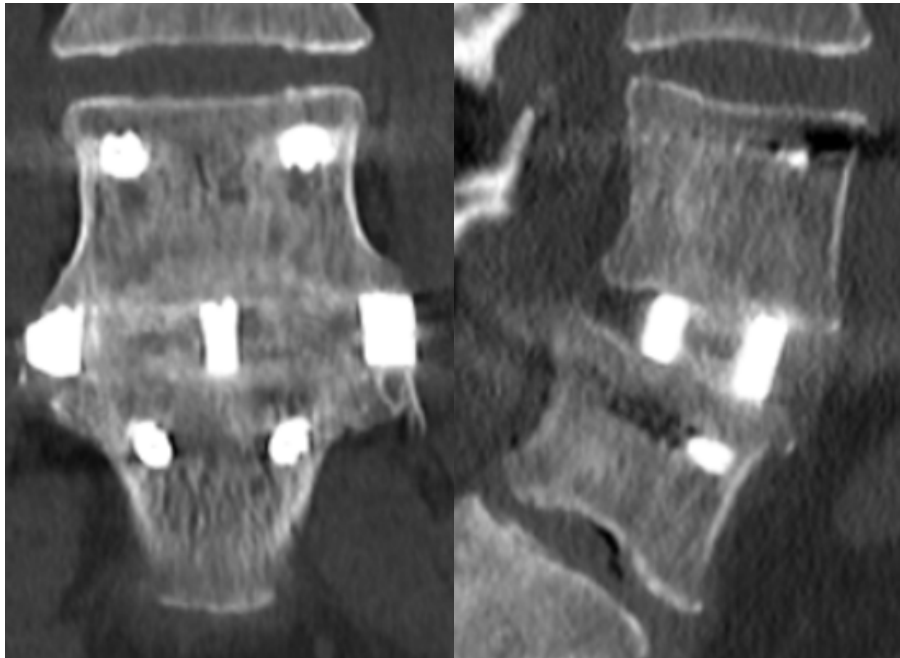
### **Surgical Intervention:** **Mg OSTEOCRETE**

L4-L5 secured with pedicle screws and rods. Cage implanted in intervertebral area and packed and surrounded by Mg OSTEOCRETE.





6 Month Post-Op



1 Year Post-Op: Successful fusion at L4-L5 utilizing Mg OSTEOCRETE

