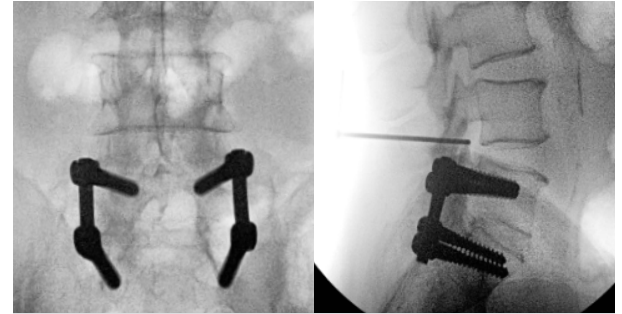


PRE-OPERATIVE IMAGING

Posterior lumbar interbody fusion procedure with cage and fixation hardware.

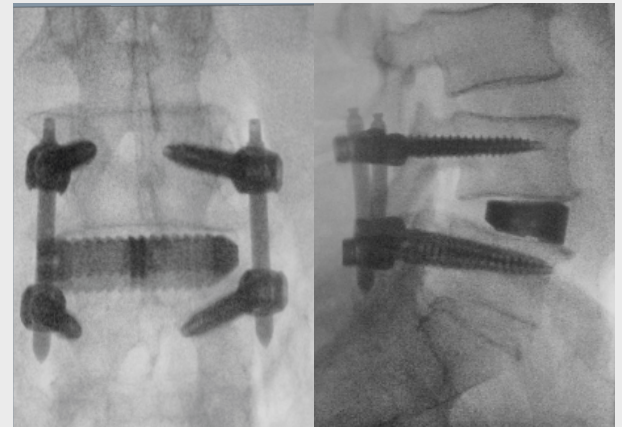


Pre-Op: Vertebral Fusion Surgery Stabilized with Screws and Rods

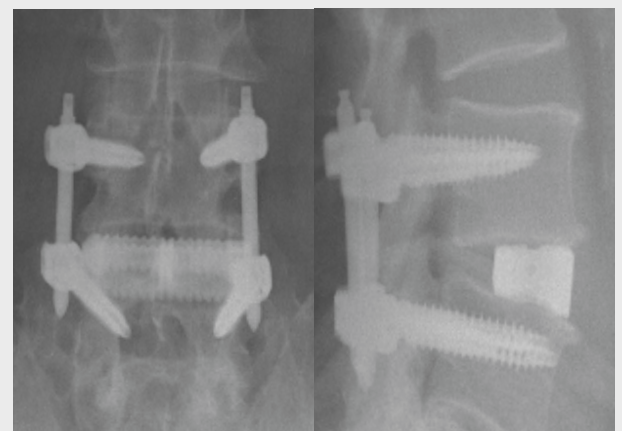
SURGICAL INTERVENTION

Surgical Intervention:
Mg OSTEOCRETE

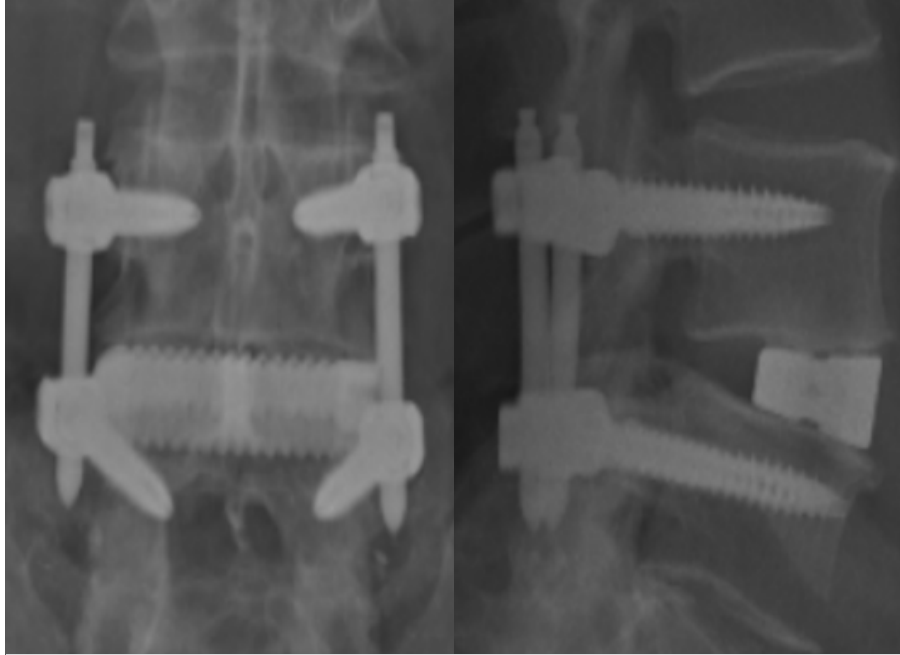
L4-L5 secured with pedicle screws and rods. Cage implanted in intervertebral area and packed and surrounded by Mg OSTEOCRETE.



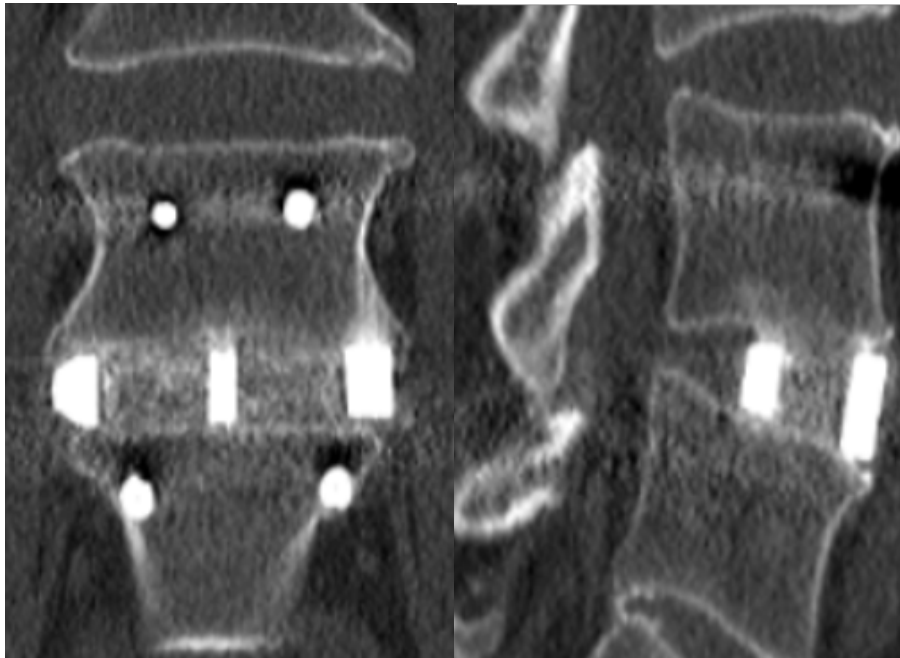
Intraoperative: Cage Packed/Surrounded by Mg OSTEOCRETE



6 Weeks Post-Op



6 Month Post-Op



1 Year Post-Op: Successful fusion at L4-L5 utilizing Mg OSTEORETE

