

Case Study:

Tibia Plateau Fracture filled with Mg OSTEOCRETE

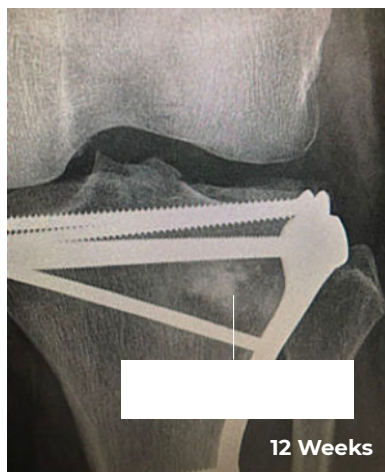
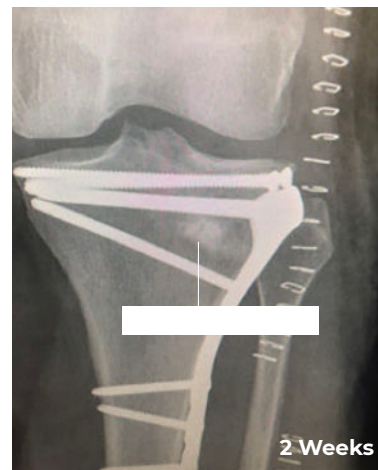
Robert J Wetzel, MD Assistant Professor Case Western Reserve School of Medicine
Fellowship Director, Orthopaedic Trauma University Hospitals Cleveland Medical Center

56YO F, Fall Down Flight of Stairs

Proximal Tibia Fracture

10 cc Mg OSTEOCRETE was used to fill the void in the tibia plateau along with internal fixation hardware.

At 12 and 20 weeks, x-rays showed signs of remodeling of the bone graft material and new bone formation.



Conclusion

At 12 weeks, the patient was weight-bearing and had full range of motion. The average resorption rate of the Mg OSTEOCRETE was 60%.

These results are specific to this individual only. Individual results and activity levels after surgery vary and depend on many factors including age, weight, and prior activity levels. There are risks and recovery times associated with surgery, and there are certain individuals who should not undergo surgery. Mg OSTEOCRETE is not intrinsic to the stability of the bone.