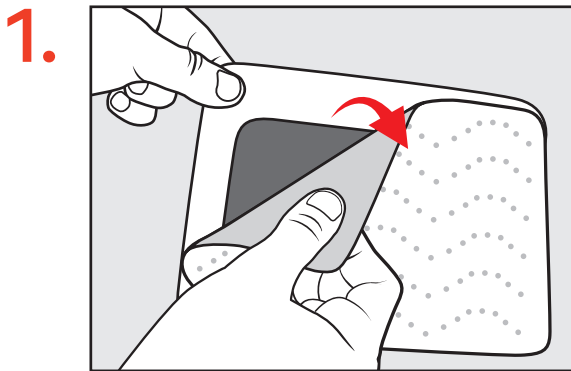


N95 FIT TEST & QUICKSTART GUIDE

Please read and familiarize yourself with all instructions below.

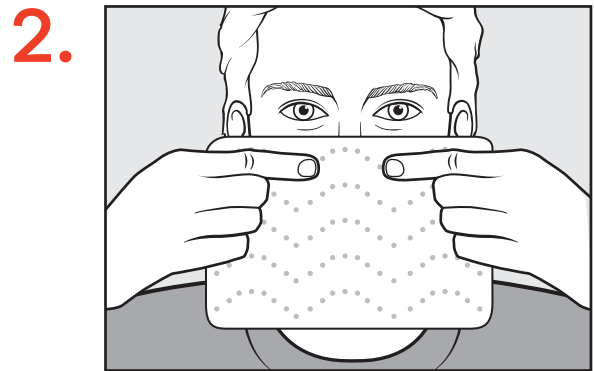
Before you start: Use an alcohol pad (recommended) to ensure face is clean. Air dry before donning mask. Use a mirror to verify proper placement.

Practice applying the mask at least 3 times before conducting a fit test.



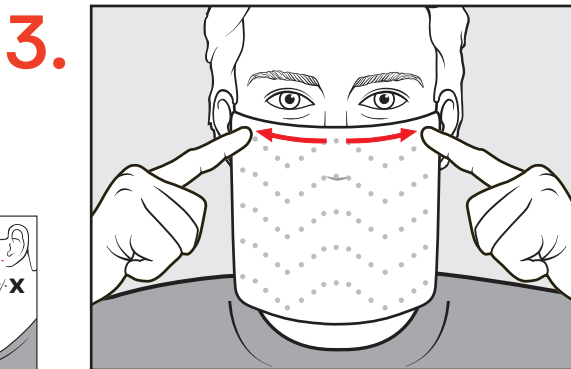
REMOVE THE RELEASE LINER

Peel back and remove the entire release liner from the back of the mask.



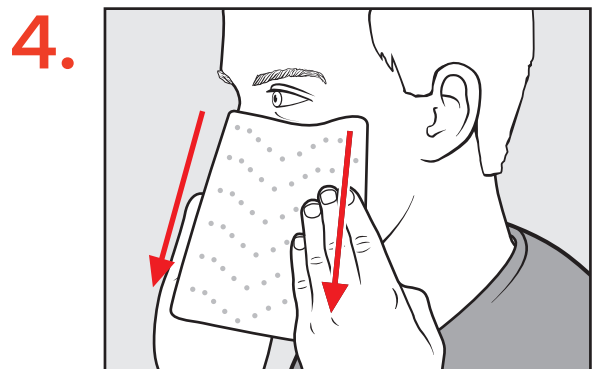
ALIGN MASK TO FACE SHAPE

Hold mask with both hands, colored side out, horizontally with the center at the bridge of your nose.



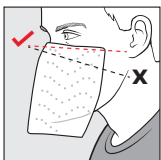
SEAL THE TOP

Using your middle finger, press the mask down on the bridge of your nose. Press down with both index fingers starting from the bridge of your nose out horizontally towards your ears, ensuring the mask is sealed securely around the contours of your nose and upper cheekbones.



SEAL THE SIDES

Open your mouth as if saying the word "NO" and slide your fingers down the sides of the mask towards your chin until your fingers meet. This will ensure you have enough room to breathe and talk comfortably.

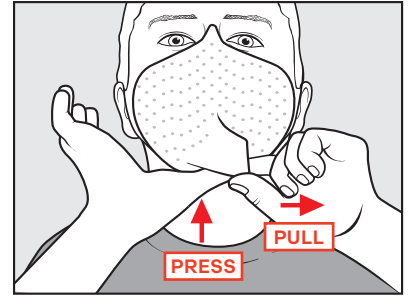
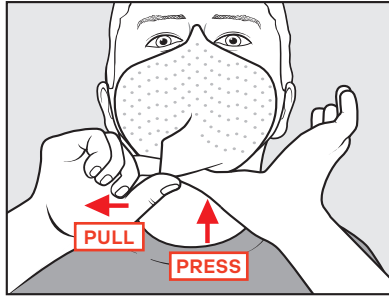
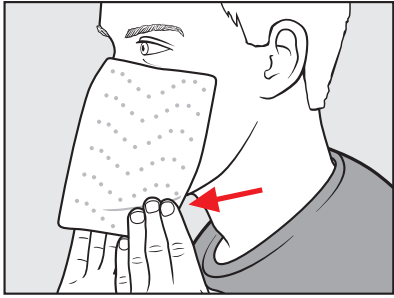


Horizontal application on the tops of the cheekbones towards the ears is crucial. If the mask is affixed in a downward slope towards the bottom of the cheekbones, it could cause improper fit.

TIPS FOR PROPER APPLICATION:

- Practice applying the mask at least 3 times before conducting a fit test
- Use of excess makeup or moisturizer may interfere with the seal
- Mask must be horizontal under the eyes and rest on the tops of the cheekbones
- Use your fingertips to firmly apply the mask
- Avoid wrinkles in the mask

5.



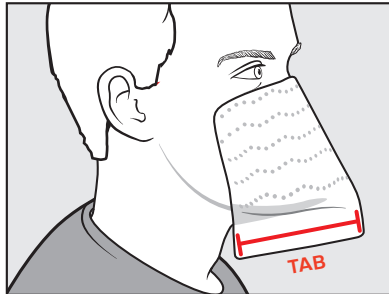
SEAL THE CHIN

Use your fingers to pinch together the remaining mask. Pull the bottom of the mask flat against your chin pulling it to one side and use your other hand to push against the bottom of your chin to ensure a good seal. Then pull the chin flap the other direction and repeat.

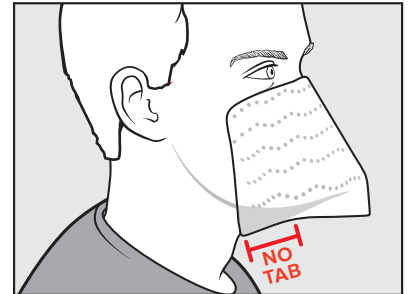
6.



PROPER FIT



IMPROPER FIT



CHECK PROPER FIT

Run fingers along the perimeter of the mask. If properly donned, the top border should be horizontal across your upper cheek bones toward your ears, not sloping downward. A tab should be formed along the bottom of the chin from the neck to the end of the chin. Make sure the mask is sealed on the underside of the chin.

CHECK THE SEAL

Breathe in and out deeply. You should not feel any air leaking along the edges of the mask. Over any area where air is felt you should apply pressure on those areas and retrace the adhesive seal border.

STORAGE AND USAGE TIPS:

- Keep in cool and dry place free of dust and debris
- Unused masks are recommended to be left in their original packaging
- After initial use, if mask is removed temporarily, ensure mask is kept in a clean place
- Mask may be placed back on liner, if available



Global Safety First, LLC
41 Leopard Road
Paoli, PA 19301
610-240-0900
ReadiMask



THIS RESPIRATOR IS APPROVED ONLY IN THE FOLLOWING CONFIGURATION:

TC-	Protection ⁽¹⁾	Alternate Respirators						Cautions and Limitations ⁽²⁾
		Alt. Size & Color						
		N1901S	N1901L	N1901X	N1902S	N1902L	N1902X	
84A-8133	N95	X	X	X	X	X	X	ABCJMNOPS

1. Protection

N95 - Particulate Filter (95% filter efficiency level) effective against particulate aerosols free of oil; time use restrictions may apply

2. Cautions and Limitations

- A. Not for use in atmospheres containing less than 19.5% oxygen.
- B. Not for use in atmospheres immediately dangerous to life or health.
- C. Do not exceed maximum use concentrations established by regulatory standards.
- J. Failure to properly use and maintain this product could result in injury or death.
- M. All approved respirators shall be selected, fitted, used, and maintained in accordance with MSHA, OSHA and other applicable regulations.
- N. Never substitute, modify, add or omit parts.
- O. Refer to user's instructions, and/or maintenance manuals for information on use and maintenance of these respirators.
- P. NIOSH does not evaluate respirators for use as surgical masks.
- S - Special or critical User's Instructions and/or specific use limitations apply. Refer to User's Instructions before donning.

ReadiMask™ N Series User Instructions

Before use, wearer must read and understand these *User Instructions*. Keep instructions for reference.



KEYS TO PROPER DONNING

1. Review the instructional video on YouTube (see link on next page)
2. Skin should be dry
3. If you wear lotion or makeup or have oily skin, you must confirm seal by performing User Seal Check (see Step 6 on this page)
4. Use a mirror to verify mask positioning
5. Mask must be horizontal under the eyes and rest on your cheek bones
6. Use fingertips to apply mask
7. Mask must follow the contours of the nose. Avoid wrinkles in mask
8. Practice applying the mask at least 3 times before conducting a fit test

Step 1:

REMOVE RELEASE LINER

Peel the entire white release liner from the back of the mask and discard the release liner.



Step 2: SEAL THE TOP

- A. Hold the mask horizontally in front of your face. Keep the printed portion of the mask on the bottom. Colored side out.
- B. Position the center of the top of the mask just below the bridge of your nose.
- C. Using your index fingers, begin sealing the top of the mask by pressing along the sides of your nose first and then outward horizontally across the tops of your cheek bones toward your ears. Press firmly to ensure complete adhesion to your skin. Keep the top border of the mask horizontal and not sloping downward.



Step 3: SEAL THE SIDES

- A. Open your mouth slightly as if saying the word "NO" (this will allow movement when talking).
- B. Slide your fingers downward from the top corners of the mask along the sides of your face. Seal the sides of the mask to your cheeks until your fingers come together under your chin.
- C. As the mask comes together under your chin, pinch the mask together with your fingers and press up under your chin. Make sure the mask is sealed completely under your chin.



Models: N1901S, N1901L, N1901X N1902S, N1902L, N1902X

Step 4: SEAL THE BOTTOM

- A. Seal the bottom edges of the mask together by pressing along the entire bottom edge with your fingers. When properly donned, no adhesive surface should be exposed, reapply if necessary.



- B. Hold the bottom of the mask near your neck and pull toward your ear. Firmly press the entire bottom of the mask upward into the bottom of your chin to assure a good seal. Repeat on the other side.



Step 5: CHECK PROPER FIT

The bottom of the mask must be sealed to itself along the entire length. A Tab should be formed under the chin (see Proper Fit below). If a Tab cannot be formed along the entire bottom (see Improper Fit below), a larger mask may be needed. All adhesive surfaces along the Tab should be aligned and sealed to each other.



Step 6: CHECK THE SEAL

- A. Starting at the top of your nose, retrace the entire border of the mask with your fingers, firmly pressing the adhesive seal of the mask to your skin. Check the areas around your nose to ensure that the mask has sealed to the skin around the creases of the nose.
- B. Check the underside of your chin to make sure the edges of the mask are sealed together and to your skin.
- C. Perform User Seal Check - Breathe in and out deeply. You should not feel any air leaking along the edges of the mask. If necessary, seal the leaks by applying pressure to those areas as needed until the leak stops. Retrace the entire border of the mask with your fingers one more time, firmly pressing the adhesive seal of the mask to your skin. If you CANNOT achieve a proper, leak-free fit, DO NOT enter a contaminated area. If you suspect a leak has occurred, LEAVE the contaminated area.



CLASS AND EFFICIENCY LEVEL

This respirator is NIOSH approved as an N95 particulate filter respirator for aerosols free of oil. When properly worn, provides 95% filtration efficiency of 0.3 micron particles as per 42 CFR 84. This is a single-use N95 particulate respirator. This respirator contains no components made from natural rubber latex.

WARNING

This respirator helps protect against certain particulate contaminants but does not eliminate exposure to, or the risk of contracting, any disease or infection. Before use, the wearer must read and understand the User Instructions provided as a part of the product packaging. Failure to follow all instructions and limitations concerning the use of the respirator, and/or failure to wear the respirator for the whole duration of exposure to contaminants, can seriously reduce the performance characteristics of the respirator and lead to sickness or death.

INTENDED USE

Before using these respirators, consult an Industrial Hygienist or Occupational Safety Professional to determine the suitability for your intended use including the following:

1. The type of contaminant(s) for which the respirator is being selected.
 2. The concentration level of contaminant(s).
 3. Whether the respirator can be properly fitted on the wearer's face. Do not use with beards, facial hair, or other conditions that prevent a good seal between the face and the face seal of the respirator.
 4. Before use, the wearer must first be trained by the employer in the correct use of the respirator in accordance with applicable safety and health standards for the contaminant and exposure level in the work area. A written respiratory protection program must be implemented, meeting all the requirements of OSHA 29 CFR 1910.134, including training, medical evaluation and fit testing.
 5. If the respirator becomes damaged or breathing becomes difficult, leave the area. Discard and replace the respirator.
 6. This is a single-use particulate respirator. No maintenance necessary. Discard the used respirator after a single use.
-

DO NOT USE AGAINST

1. Concentrations of contaminants which are unknown or are immediately dangerous to life or health.
 2. Concentrations of particulates which exceed the maximum use concentration or 10 times the OSHA Permissible Exposure Limit, whichever is lower.
 3. Gases, vapors, asbestos, paint spray, sandblasting, or particulate materials which generate harmful vapors.
 4. Oil-based mists.
-

CONTRAINDICATION

This device is not designed, sold, or intended for use except as indicated. This respirator does not supply oxygen.

TIME USE LIMITATION

If respirator becomes damaged, soiled, or breathing becomes difficult, leave the contaminated area immediately and dispose of the respirator. Discard the used respirator after single use.

STORAGE

Store unused respirators in a clean, dry, non-contaminated area.

S – SPECIAL OR CRITICAL USER'S INSTRUCTIONS

1. Skin should be dry and free of oil.
 2. If you wear lotion or makeup or have oily skin, you must confirm seal by performing User Seal Check (See Step 6 – Check the Seal)
 3. Use a mirror to verify mask positioning.
-

THIS RESPIRATOR IS APPROVED ONLY IN THE FOLLOWING CONFIGURATION

1. PROTECTION

Particulate Filter (95% filter efficiency level) effective against particulate aerosols free of oil; time use restrictions may apply

2. CAUTIONS AND LIMITATIONS

- A - Not for use in atmospheres containing less than 19.5% oxygen.
 - B - Not for use in atmospheres immediately dangerous to life or health.
 - C - Do not exceed maximum use concentrations established by regulatory standards.
 - J - Failure to properly use and maintain this product could result in injury or death.
 - M - All approved respirators shall be selected, fitted, used, and maintained in accordance with MSHA, OSHA and other applicable regulations.
 - N - Never substitute, modify, add or omit parts.
 - O - Refer to user's instructions, and/or maintenance manuals for information on use and maintenance of these respirators.
 - S - Special or critical User's Instructions and/or specific use limitations apply. Refer to User's Instructions before donning.
-

INSTRUCTIONAL VIDEO

Instructional video is available at <https://www.youtube.com/watch?v=ol4cwd-g0fs>

Also accessible by scanning this QR Code





Strapless N95 Face Mask Shelf-Life Extension Notification

Date: 01Jul2022

To Whom it May Concern,

This letter is to inform you regarding the extension of the shelf-life expiration date of the Strapless N95 Face Mask. A Stability study was conducted on the adhesive and concluded that the adhesion is good for 3 years. Note: the melt blown filtration material does not have a shelf life.

Table 1 lists the lot numbers of the Strapless N95 Face Mask labeled with the current shelf life and the extended shelf life.

Sincerely,

Alliant Biotech Team

A handwritten signature in blue ink, appearing to be initials or a name, is written over the typed name "Alliant Biotech Team".

Table 1:

Part Number	Lot Number	Labeled Shelf Life	Extended Shelf Life
N1906L	M0522605	21-May-2022	21-May-2023
N1906L	1219785.1	26-Jun-2022	26-Jun-2023
N1906L	1220018.1	26-Jun-2022	26-Jun-2023
N1906L	1220220.1	26-Jun-2022	26-Jun-2023
N1906S	M0612604	1-Jul-2022	1-Jul-2023
N1906XL	M0703604	10-Jul-2022	10-Jul-2023
N1906L	M0729601	30-Jul-2022	30-Jul-2023
N1906L	M0803601	27-Aug-2022	27-Aug-2023
N1906S	M0803602	27-Aug-2022	27-Aug-2023
N1906XL	M0803603	31-Aug-2022	31-Aug-2023
N1906L	M0803604	13-Oct-2022	13-Oct-2023
N1906S	M0803605	19-Oct-2022	19-Oct-2023
N1906L	M1001601	19-Oct-2022	19-Oct-2023
N1906L	M1026601	13-Nov-2022	13-Nov-2023
N1906L	M1112600	24-Nov-2022	24-Nov-2023